

MODELS 451/452

ALUMINUM FULL-VIEW



Brown powder coated aluminum, Satin Etched glass

SECTIONAL DOORS THAT OFFER MAXIMUM LIGHT AND VISIBILITY

Wayne Dalton's Aluminum Full-View doors are the preferred choice when visibility and light transmission are just as important as aesthetics.

These doors are weather-resistant, virtually maintenance-free, and are ideal for commercial applications such as auto dealerships, car washes and restaurant patios.

- » CHOOSE FROM A WIDE VARIETY OF GLASS INCLUDING ANNEALED, ACRYLIC, INSULATED AND POLYCARBONATE GLASS
- » STANDARD SIZES UP TO 16'1" HIGH AND 22'2" WIDE
- » AVAILABLE IN ANODIZED AND POWDER COAT FINISHES

MODELS 451/452

STANDARD FEATURES OVERVIEW

CONSTRUCTION

MAX HEIGHT	Model 451: 16'1" (4,902.2mm) Model 452: 14'1" (4,297.7mm)
MAX WIDTH	22'2" (6,705.6 mm)
DOOR ASSEMBLY	Stile and rail assembly of aluminum alloy 6063-T6, 1-3/8" thick stiles and rails, joined with self tapping screws.
AIR INFILTRATION	Meets IECC® requirements for air infiltration with 3rd party tested values below 0.4 cfm/ft ² .
RAILS	Top and bottom rails with 3-1/2" wide, lower intermediate rail 1-3/8", upper rail 1-5/8", minimum wall thickness 0.062".
STILES	Single end stiles are 3-1/2" wide, center stile 3" wide, minimum wall thickness 0.062".
SPRINGS	10,000 cycles.
GLAZING	1/8" (3mm) in 9 options, 1/4" (6 mm) in 5 options, 1/2" (13 mm) in 4 options, 5/8" (16 mm) in 3 options.
FINISH	Clear anodized.
WINDLOAD	Provide to meet the design/performance requirements specified.
LOCK	Interior mounted slide lock.
WEATHERSTRIPPING	Flexible bulb-type strip at bottom section.
TRACK	Provide track as recommended by manufacturer to suit loading required and clearances available.
MANUAL OPERATION	Pull rope or chain hoist.
ELECTRIC MOTOR OPERATION	Provide UL listed electric operator, equal to Genie Commercial Operators, size and type as recommended by manufacturer to move door in either direction at not less than 2/3 foot or more than 1 foot per second.

WARRANTY

TERMS	One (1) year limited warranty on door systems
--------------	---

OPTIONS

- Springs: 25,000, 50,000 or 100,000 cycles
- Lock options: Interior mounted slide lock with interlock switch for automatic operator, keyed lock, keyed lock with interlock switch for automatic operator
- Weather stripping: Jamb and header seals
- Insulated rail and stiles for a R-value* of up to 3.97 (452 only)
- Powder coat finish: Color as selected by architect from manufacturer's standard colors
- Anodized finishes: Bronze, Black
- Windload options available up to 30 psf, up to 16'2" wide

*Wayne Dalton uses a calculated R-value for our insulated doors.

Perfectly suited for applications where maximum light and visibility are desired, Wayne Dalton's Aluminum Full-View doors help create a pleasant interior environment while offering a warm and open look from the exterior.

FINISH OPTIONS

Anodized



Clear (standard)



Black

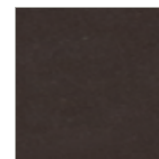


Bronze

Powder Coat (optional)



White



Black



Bronze



Brown

Actual colors may vary from brochure due to fluctuations in the printing process. Always request a color sample from your Dealer for accurate color matching.

Wayne Dalton also offers approximately 200 RAL powder coat options to complement the exterior colors of a building.



RAL powder coated aluminum, Clear glass

ALUMINUM FULL-VIEW

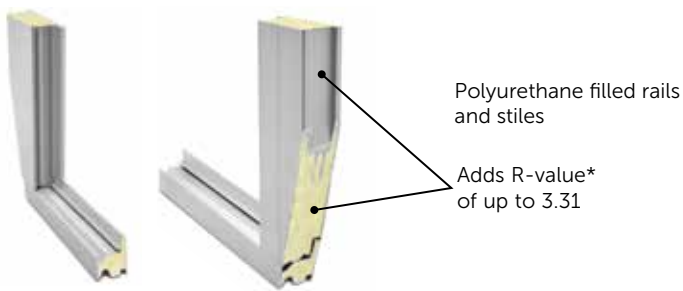
GLASS OPTIONS

TYPE OF GLASS	THICKNESS	TINT	MODEL 451	MODEL 452
Annealed	1/2" Insulated	Clear, Gray, Satin Etched		•
	1/2" Low E	Clear		•
	1/4"	Clear, Gray, Bronze, Satin Etched		•
	1/8"	Clear, Gray, Bronze, Satin Etched	•	
Tempered	1/2" Insulated	Clear, Gray, Bronze, Satin Etched		•
	1/2" Insulated Low E	Clear, Gray		•
	1/4"	Clear, Gray, Bronze, Satin Etched		•
	1/4" Low E	Clear		•
	1/8"	Clear, Gray, Bronze, Solex Green, Satin Etched	•	
Wire	1/4"	Clear		•
Laminated	1/4"	Clear		•
Acrylic	1/8", 1/4"	Clear	•	
Polycarbonate	1/8", 1/4"	Clear	•	
	1/4", 5/8" Multi-Wall	Clear, White, Bronze	•	

Custom glazing available

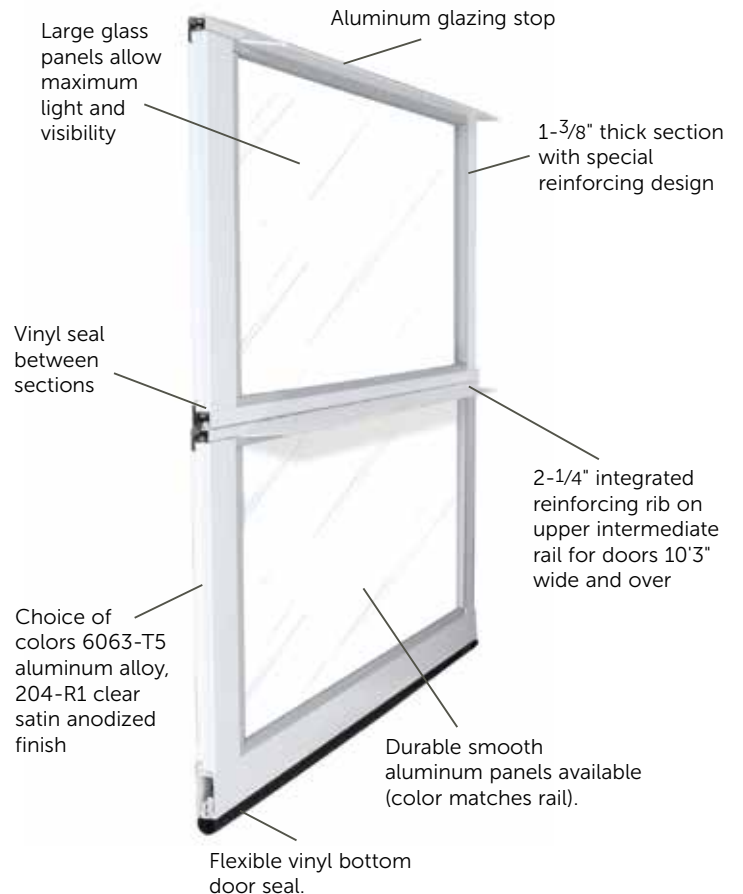
OPTIONAL POLYURETHANE INSULATION

(Model 452 only)



*Wayne Dalton uses a calculated R-value for our insulated doors.

R-VALUES MODEL 452	10x10 DOOR	12x12 DOOR	14x14 DOOR
1/2" Insulated glass Low E (R = 2.38) with polyurethane filled rails and stiles	3.31	3.25	3.25
1/2" Insulated glass (R = 1.75) with polyurethane filled rails and stiles	2.79	2.69	2.69



GENERAL OPERATING CLEARANCES

TYPE	HEADROOM		SIDEROOM		DEPTH INTO ROOM	CENTER LINE OF SPRINGS	
	2" TRACK	3" TRACK	2" TRACK	3" TRACK	2" AND 3" TRACK	2" TRACK	3" TRACK
Standard Lift Manual 12" R	13"-17"	NA	4.5"	5.5"	Opening Height +18"	Opening Height +12"	N/A
Standard Lift Manual 15" R	15"-20"	16"-21"				Opening Height +13"	Opening Height +14"
Standard Lift Motor Oper. 12" R	15"-20"	NA			Opening Height +66"	Opening Height +12"	N/A
Standard Lift Motor Oper. 15" R	15"-20"	18"-24"				Opening Height +13"	Opening Height +14"
High Lift Manual	High Lift +12"				24" One Side		Opening Height -Lift +30"
High Lift Motor Oper.							
Vertical Lift Manual	Door Height +20"		4.5"	5.5"	18"	Double Door Height +13"	
Vertical Lift Motor Oper.			24" One Side				
Low Headroom Manual	6"-15"	6"-15"	6"	9"	Opening Height +20" to-26"	N/A	
Low Headroom Motor Oper.	9"-17"	9"-17"			Opening Height +66"		

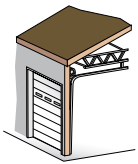
PANEL/SECTION SELECTION GUIDE

DOOR WIDTH	NUMBER OF PANELS	DOOR HEIGHT	NUMBER OF SECTIONS
Up to 9'2"	2	Up to 8'1"	4
9'3" to 12'2"	3	8'2" to 10'1"	5
12'3" to 16'2"	4	10'2" to 12'1"	6
16'2" & over	Call Factory	12'12" to 14'1"	7
		14'2" thru 16'1"	8
		16'2" & Over	Call Factory

NOTES:

- 1) Springs must be rear mount to achieve minimum headroom listed. Front mount torsion headroom depends on drum size, and varies over the range listed.
- 2) 8" side-room required, one side, for doors with chain hoist.
- 3) Headroom for standard lift depends on drum size, and varies over the range listed.

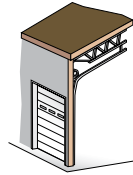
TRACK SELECTION GUIDE



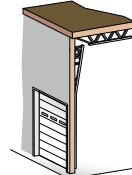
STANDARD LIFT



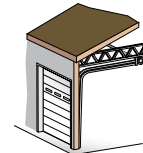
HIGH LIFT
break-away is standard, straight incline is available



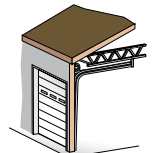
ROOF PITCH
standard or high lift



VERTICAL LIFT
break-away is standard, straight incline is available



LOW HEADROOM
rear mount torsion



LOW HEADROOM
front mount torsion



Architect Resource Center

Visit wayne-dalton.com/architect-resource-center to find our Architect Resource Center. In this tool, you will quickly find all of the specifications, drawings and documents you need to complete your project.

Wayne Dalton
COMMERCIAL DOORS

DISTRIBUTED BY:

2501 S. State Hwy, 121 Bus., Ste 200
Lewisville, TX 75067

wayne-dalton.com

